

Tips for a Successful Dog Adoption



The first few days and weeks in your home are special and critical for a new dog.

Your newly-adopted canine will need some time to acclimate, learn your routine and understand what is expected of her. Setting up some clear structure with your family for your dog will be paramount in making as smooth a transition as possible.

Proper Identification

County tags, rabies vaccination tag and owner information tag



Mesa County requires all owned canines to be current on her rabies vaccination as well as wear its corresponding license tag at all times.

We also recommend adding an identification tag with your phone number so you may be contacted in case your dog gets lost.

All Roice-Hurst animals have a microchip. This device is the size of a grain of rice and is implanted underneath their skin. It can be scanned by veterinary clinics or animal shelters if your dog loses her collar and tags. Always make sure your information is up-to-date.

Dog-Proofing Your Home

Decide where your dog is allowed to go within your home. Dog-proof the area where your pooch will spend most of his time during the first few months.



This may mean taping loose electrical cords to baseboards; storing household chemicals on high shelves; removing plants, rugs, and breakables; setting up a crate; and installing baby gates.

New vs. Old Diet

When you pick up your dog, remember to ask what and when she is fed. Replicate that schedule for at least the first few days to avoid gastric distress.



If you wish to switch to a different brand, do so over a period of about a week by adding one part new food to three parts of the old for several days; then switch to half new food, half old; and then one part old to three parts new.

Introducing Your Pets

If you have another dog, hopefully you got a chance to introduce them and ensure they are a good personality and temperament match before the adoption.



If you already have a kitty at home, introduce them gradually following our suggestions on "Introducing Dogs and Cats".

Always supervise the interaction between your newly-adopted and resident pet to ensure they are respecting each other's boundaries.

Positive Reinforcement

Ever hear the expression "you can't teach an old dog new tricks?" Well, in reality, all dogs can learn new tricks and routines given enough time and the right training technique.



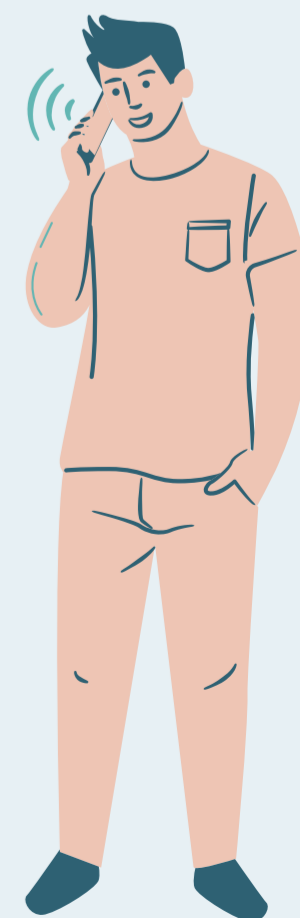
Positive reinforcement is the only humane and effective way to train dogs. This means rewarding them for all good behavior and never using punishment as it only adds stress and weakens your trust and bond with them.

Reach Out To Us

Having trouble acclimating your dog?

Our trained Dog Behavior Counselor is one phone call away and will be happy to guide you through any behavioral challenges **free of charge**.

We recommend scheduling a behavior consult as soon as you see the first signs of behavioral issues. **The earlier you turn an unwanted behavior around, the easier it will be!**



HEARTWORM: DID YOU KNOW?



TRANSMITTED BY MOSQUITO BITES

More than 70 species of mosquitoes are capable of transmitting heartworm and virtually 100% of dogs exposed to infectious heartworm larvae become infected. Dogs are natural hosts, but cats can also be infected.



PREVENTION IS KEY

Prevention is far more effective and less costly than treatment. Your veterinarian can recommend the best method of prevention based on your pet's risk factors and lifestyle and can be as simple as a pill given once a month.



HEARTWORMS CAN BE FATAL

Heartworms, if left untreated, are usually fatal or cause long-term damage. Additionally, the treatment is not always effective and can also be fatal. The best option is to always prevent it.



TESTS ARE AVAILABLE

Your veterinarian can perform a simple blood test which detects adult worms before starting your pet on a preventative. Further tests may be necessary to confirm a positive diagnosis.