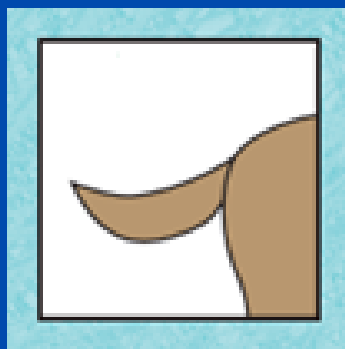
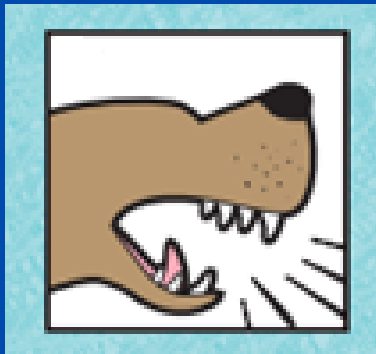


CAN YOU READ BODY LANGUAGE?

Put a ✓ next to all the dogs that are okay to pet!

Put an ✗ next to all the dogs you shouldn't pet!

TeachHeart.org



CAN YOU READ BODY LANGUAGE?

Put a ✓ next to all the dogs that are okay to pet!

Put an ✗ next to all the dogs you shouldn't pet!

TeachHeart.org



Showing all teeth - angry



Neutral, closed mouth



Relaxed, open mouth



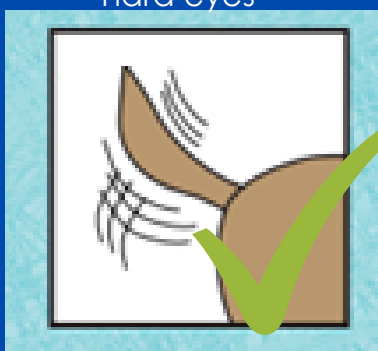
Ears perked up, stiff mouth,
hard eyes



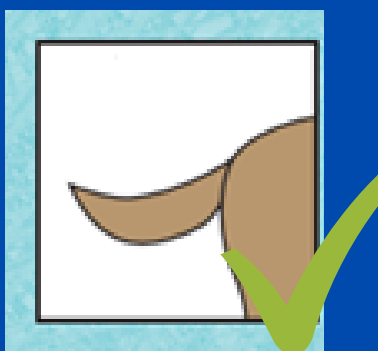
Relaxed mouth and eyes



Ears back- scared or worried



Wagging tail



Neutral, relaxed tail



Tail raised high- on high alert



Tail tuck, worried or scared



Hair sticking up-angry or scared



Neutral, relaxed body